

2.4GHz 300Mbps Hi-Power Outdoor Wireless TDMA Base Station

WIS-L2415S

WiD™

TDMA protocol

15dBi

dual-pola antenna



protection level



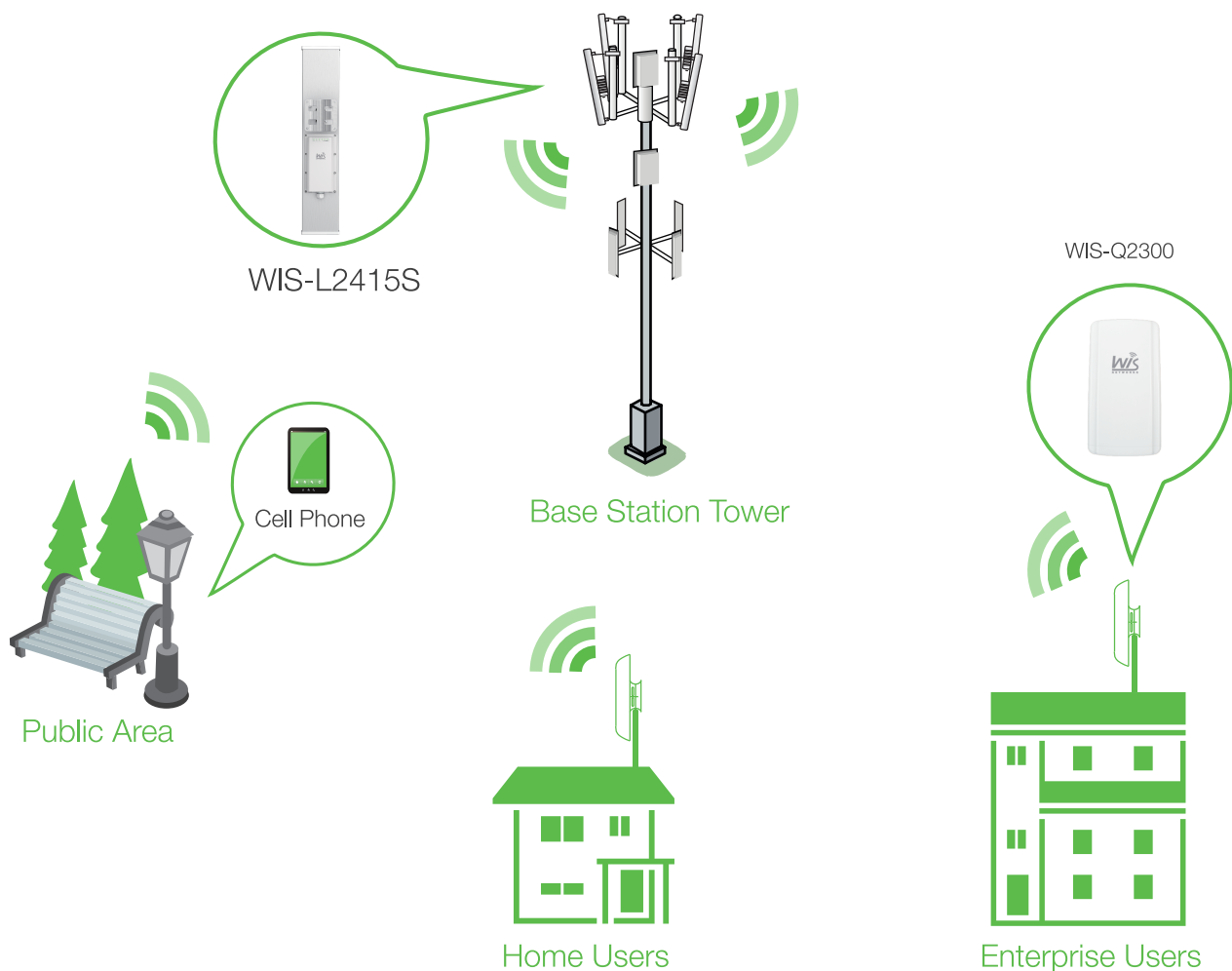
Product Overview

WIS-L2415S is a 300Mbps 2*2 MIMO Hi-Power outdoor wireless base station based on 802.11b/g/n technology. It is industry die-cast IP67 design with high performance, cost-effective and dedicated to long distance wireless network solutions. Featuring the revolutionary WiD TDMA technology and 15dBi 120° dual-polarized sector antenna, WIS-L2415S helps to get more clients accessed than legacy WiFi technology and greatly improve the network scalability in throughput and latency. WIS-L2415S is best applied to rural wireless Internet, wireless hotspot and other industrial wireless solutions.

Features and Benefits

- WiD TDMA greatly improves the network scalability in throughput and latency
- Compliant with 802.11n/g/b, speed up to 300Mbps
- 15dBi dual-polarized antenna to expand coverage and enhance coverage density
- High output transmission power and receive sensitivity optimized
- Easy deployment and tilt adjustment with provided mounting kits
- Passive POE(24VDC) for flexible deployment
- IP67 outdoor die-cast aluminum weather-proof housing
- OEM/ODM, customized enclosure and software available

Network Example



The WIS-L2415S as base station in PtMP WISP connection.

Specification

> Radio

- 802.11b/g/n radio (Atheros 600MHz)
- Speed up to 300 Mbps
- Frequency Range: 2.4-2.4835GHz
- Tx Power up to 27dBm
- Rx Sensitivity 300M: -73dBm@10% PER
54M: -78dBm@10% PER
1M: -98dBm@10% PER

> Antenna

- 15dBi dual-polarized directional antenna
- Beamwidth(HPBW): Horizontal: 120°, Vertical: 8°
- Open space up to 1~10km (dependent)

>Physical Parameters

- Dimension: 700*133*95mm
- Wight: 2.9kg
- Enclosure: IP67 die-cast aluminum
- ESD Protection: 16kV
- Lightning Protection: 8kV
- Working Temp: -40 ~ 70°C
- Storage Temp: -40 ~85°C
- Working Humidity: 10%~95% non-condensing

> Interfaces

- 1x 10/100Base-T Ethernet (RJ45 with Passive PoE)
- Grounding Terminal

> Power

- 24VDC, 0.75A
- Power Consumption: 6W

>Security

- Integrated Firewall
- WPA/WPA2;WPA-PSK/WPA2-PSK (AES/TKIP) Encryption; 64/128-bit WEP;

>LED

- Power:On/Off
- LAN:On/Off/Flashing
- WLAN:On/Off/Flashing
- RSSI Signal: 1,2,3

>Warranty

- 2 Year

>Certification

- CE, RoHS

>Package content

- WIS-L2415S
- Quick Setup Guide
- Power Adapter with Passive PoE
- Mounting kits

Antenna Information

